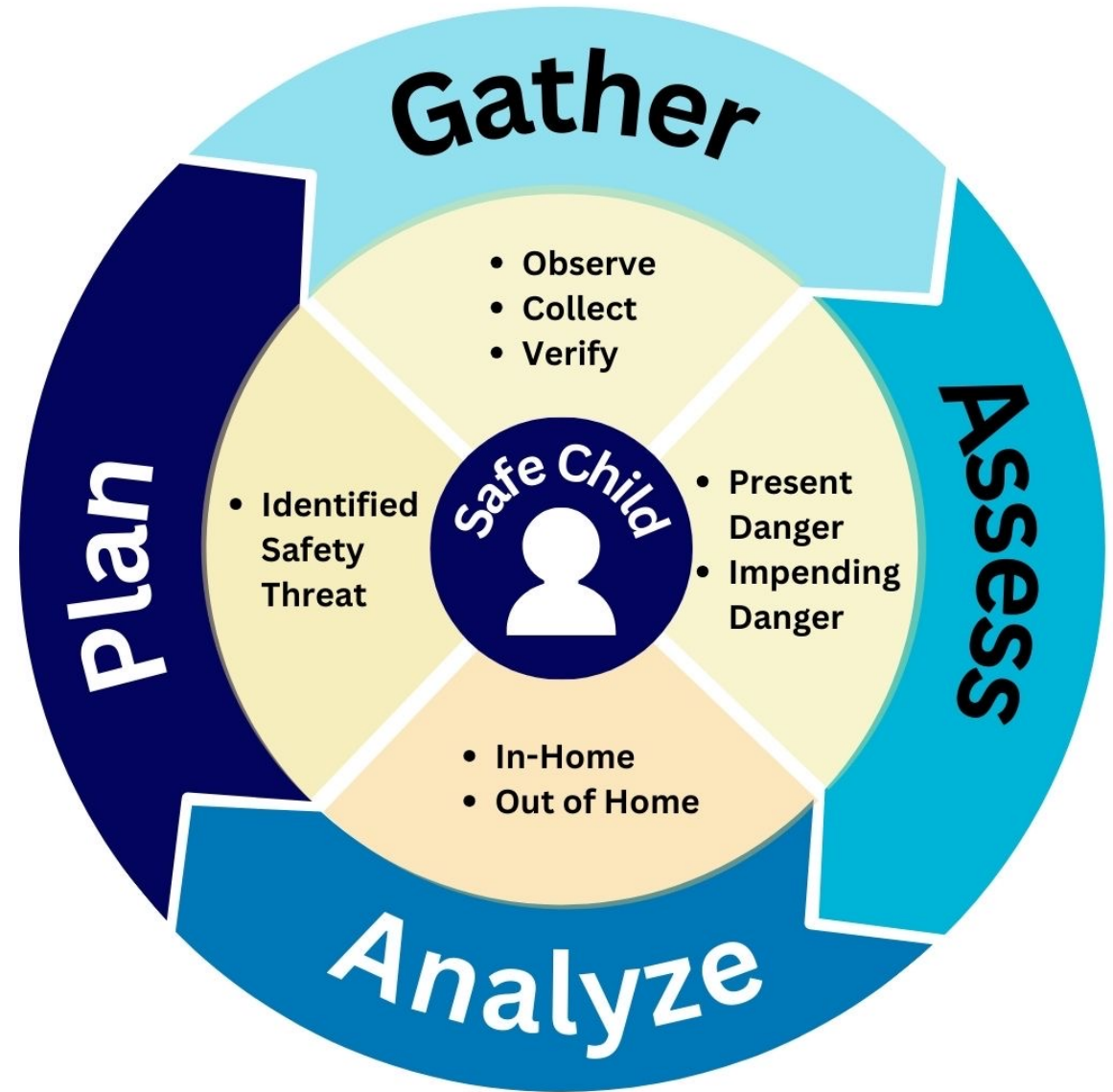
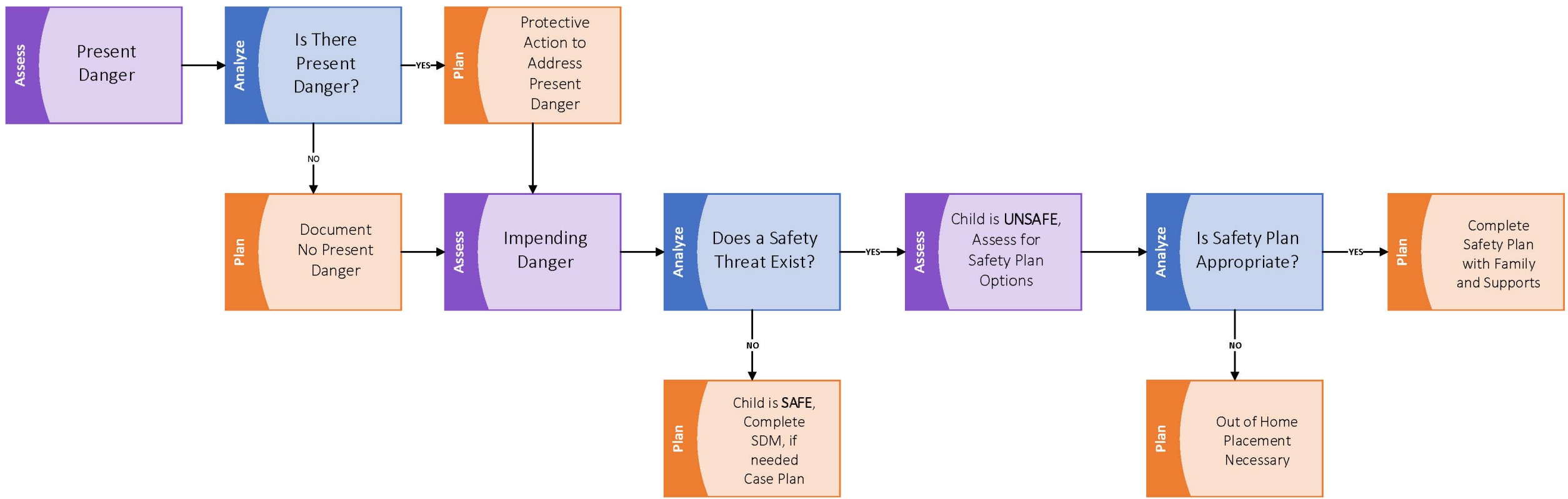


DCYF uses the Safety Framework to assess child safety

Workers continually assess safety throughout the life of the case

The Safety Framework is based on a nationally recognized safety-based model which has demonstrated effectiveness in reducing out of home placements when a child as been deemed “unsafe.”





Task

Gathering Information (6)

Identification of Safety Threat (17)

Identification of Threshold Criteria (5)

Safety Plan Analysis (4)

Purpose

Comprehensive information required to complete a global assessment, identify impending danger and develop quality plans

To identify the domain of concern which will help support specific catered plans to mitigate the threat to safety

To identify if a child is UNSAFE and is in impending danger

To assess information gathered to determine if an unsafe child is able to remain in the home with a safety plan



Gathering Information

The Child Safety Framework uses **six** areas of focus when gathering information.

1. Extent of maltreatment
2. Circumstances accompanying the maltreatment
3. Child functioning
4. Parenting disciplines
5. Parenting practices
6. Parent daily functions (outside of the role of parental unit)



Risk Factors and Safety Issues

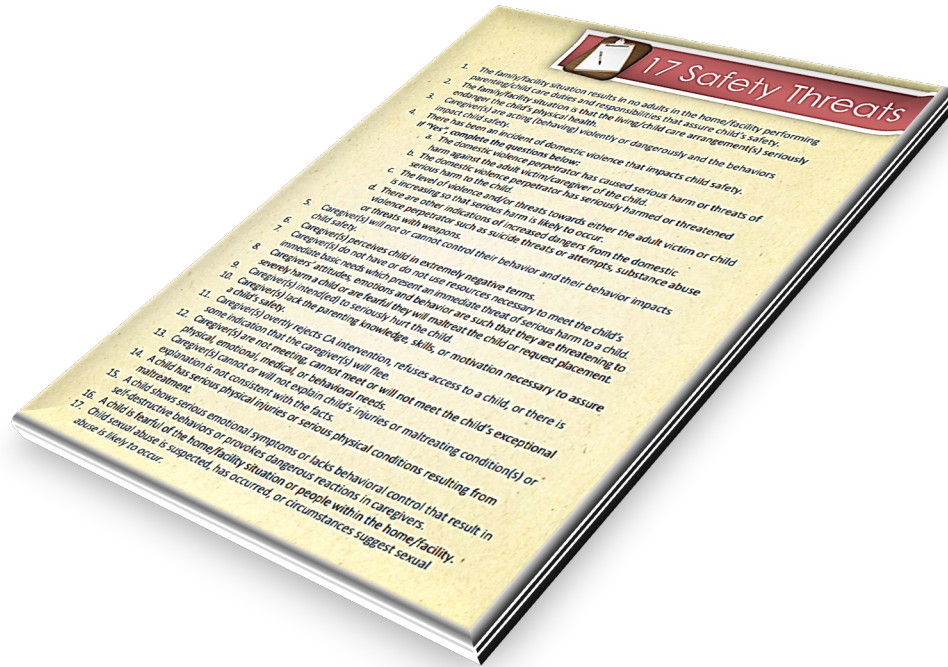


- **Risk Factor**: A situation that can be linked with a harmful result over time.
- **Safety Issue**: A situation that is linked with a major harmful result in the near future.

Safety Threat

DCYF currently has 17 safety threats defining different categories related to...

Family *behavior, conditions* or *circumstances* that create **present** or **immediate danger** resulting in *severe impacts* on the child.



Present Danger

Present danger is *immediate, significant,* and clearly observable *severe harm* or *threat of severe harm* occurring in the present

Present Danger is assessed at every contact DCYF has with a child.



Impending Danger

Parenting **behavior** that is harmful and destructive to a child's cognitive, social, emotional or physical development *that is likely to occur in the immediate or near future* that **could result in** one or more of the following outcomes:

- ✘ Serious or severe harm
- ✘ Injury requiring medical attention
- ✘ Life endangering illness
- ✘ Death



Present Danger

Present Danger threats are controlled by immediate protective actions

Protective Action Plans are limited in scope and time; we do not have all the information but we cannot walk away without taking action

Impending Danger

Impending Danger threats are controlled by safety plans

Safety plans are developed with families and other child safety supports



What is the **purpose** of the plan and why are there **more than one** type of plan?



PROTECTIVE ACTION
PLANS



SAFETY PLANS



CASE PLANS

Original: December 19, 2022
Revised Date: August 29, 2023

Child Welfare Programs Division

Jasmine Hodges, Statewide Safety Program Manager

www.dcyf.wa.gov

Safety Plans and Case Plans are different, but work together



Safety Planning

- Childcare
 - Harm reduction kits
 - Pregnant and Parenting Individual Treatment
 - Friends, family and other safety plan participants
- Does not require change in parent's attitude or behavior
 - Controls threats immediately



Case Planning

- Requires changing parental behavior
 - control threats over time
- Substance Use Disorder Treatment
 - Mental Health Treatment
 - Combined In-Home Services
 - Domestic Violence Services



Safety Threshold

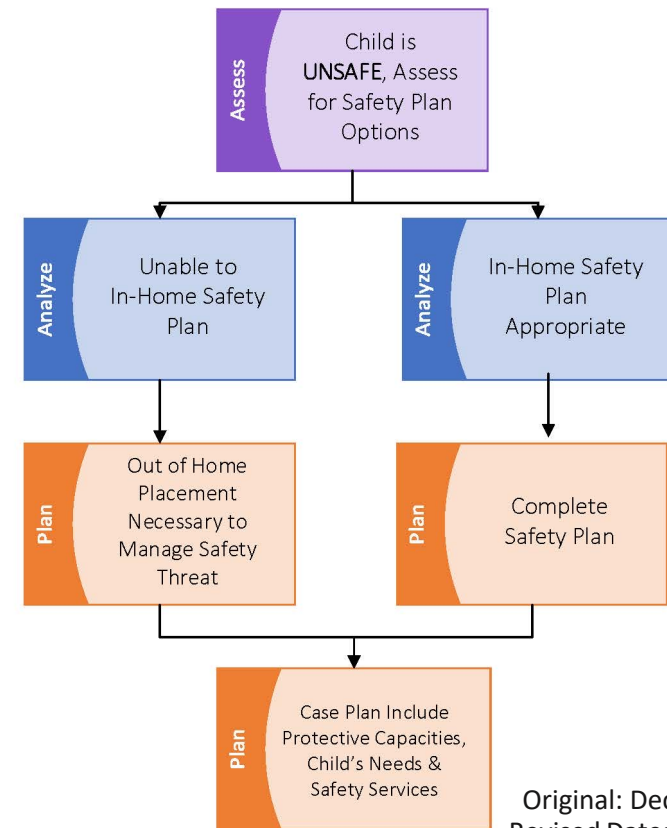
In order to determine that a threat exists, the following **five** criteria must be met:

1. Severe impacts on the child
2. Occurring immediate or in the near future
3. Out of control
4. Vulnerable child
5. Observable and specific



What is the criteria to safety plan?

- The Safety Plan Analysis is based on a guide that delves into four different domains:
 - There is a parent/caregiver or adult in the home.
 - The home is calm enough to allow safety providers to function in the home.
 - The adults in the home agree to cooperate with and allow an In-Home Safety Plan
 - Sufficient, appropriate, reliable resources are available and willing to provide safety services and tasks.



Original: December 19, 2022
Revised Date: August 29, 2023

Child Welfare Programs Division

Jasmine Hodges, Statewide Safety Program Manager

www.dcyf.wa.gov

